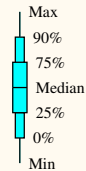


PS 146 69 00S 017 00W

Position: S69.00 / W017.00

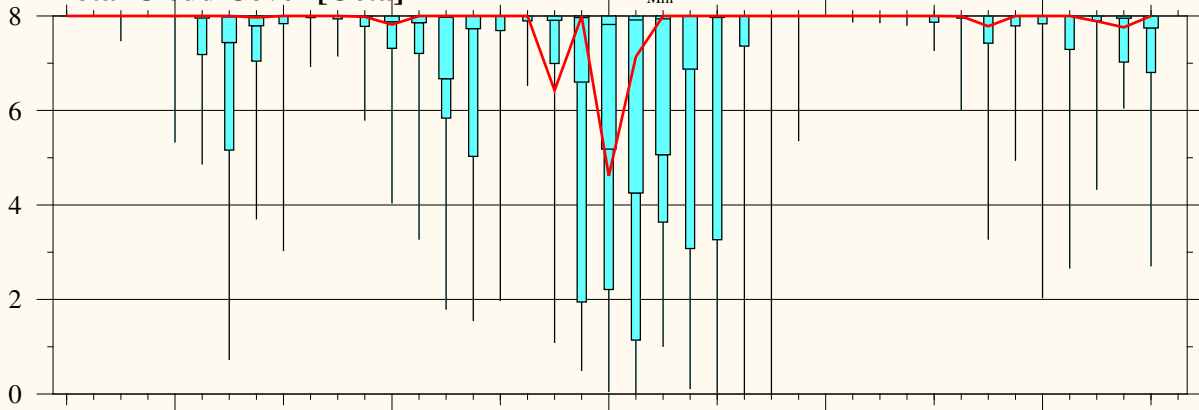
Model Base Time:

2025-03-13 / 12z

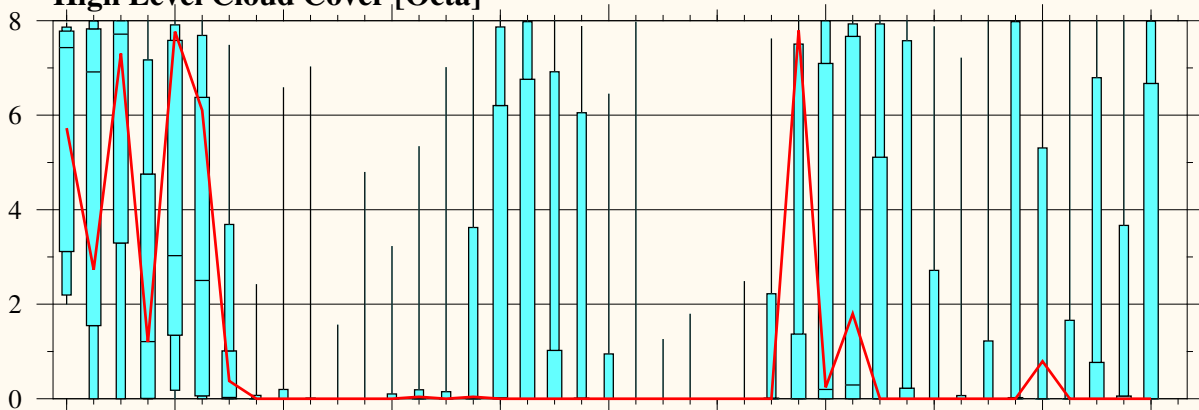


Operational run

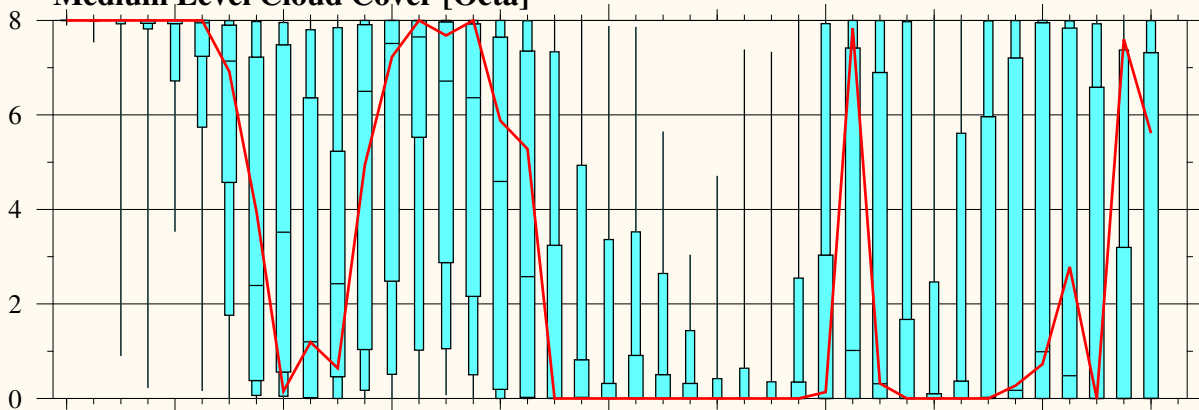
Total Cloud Cover [Octa]



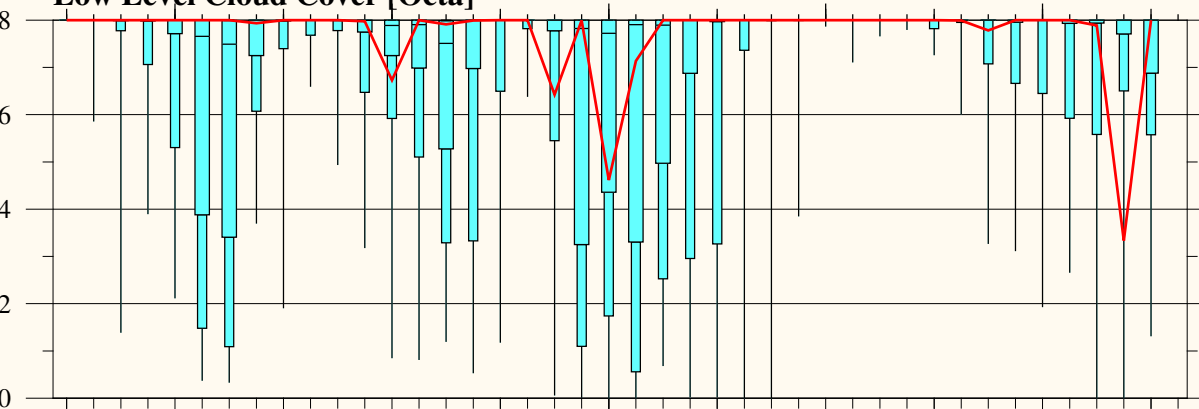
High Level Cloud Cover [Octa]



Medium Level Cloud Cover [Octa]



Low Level Cloud Cover [Octa]



Thursday
March 13

Friday
March 14

Saturday
March 15

Sunday
March 16

Monday
March 17

Tuesday
March 18

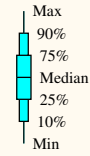
2025

PS 146 69 00S 017 00W

Position: S69.00 / W017.00

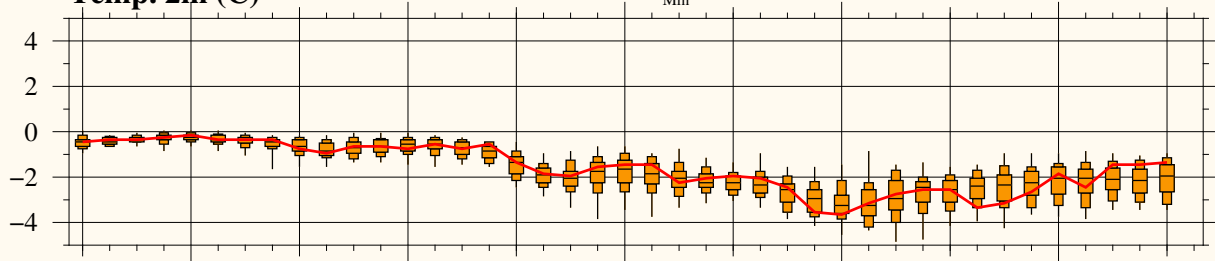
Model Base Time:

2025-03-13 / 12z

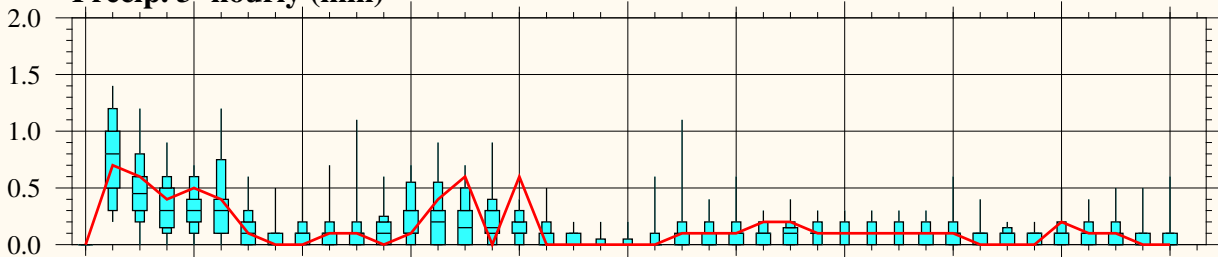


Operational run

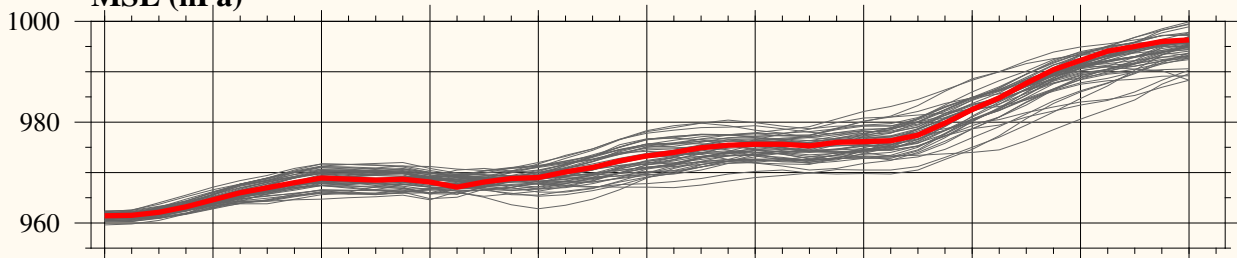
Temp. 2m (C)



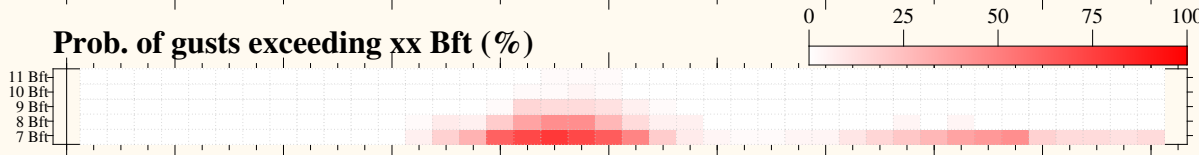
Precip. 3-hourly (mm)



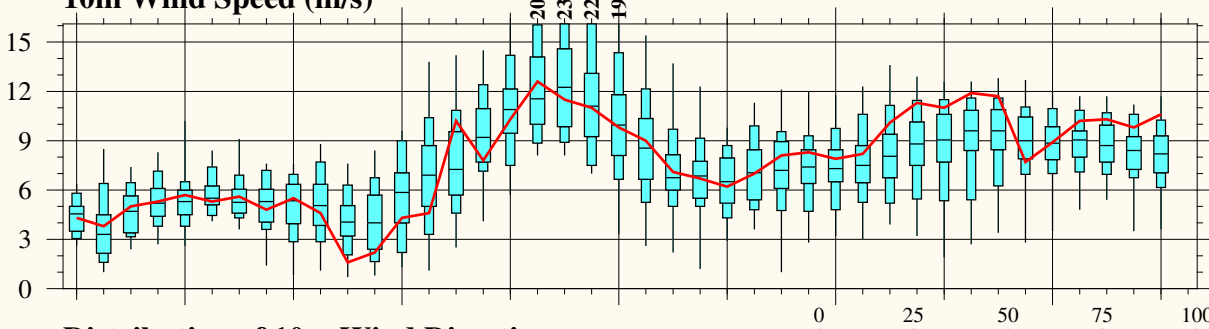
MSL (hPa)



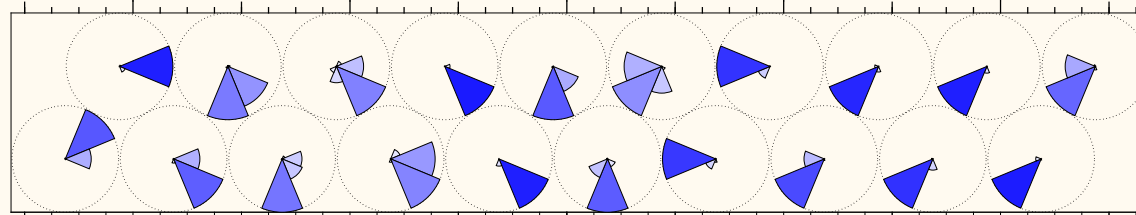
Prob. of gusts exceeding xx Bft (%)



10m Wind Speed (m/s)



Distribution of 10m Wind Direction



Thursday March 13 Friday March 14 Saturday March 15 **Sunday** March 16 Monday March 17 Tuesday March 18

2025